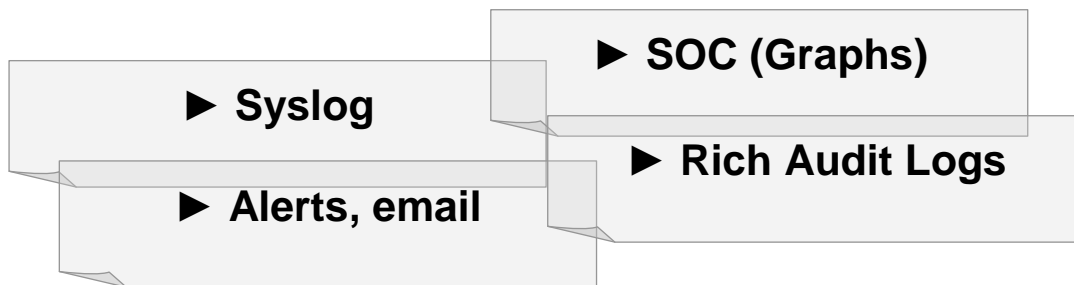




Bsafe/ Cross-Platform Audit  
Critical Data Monitor

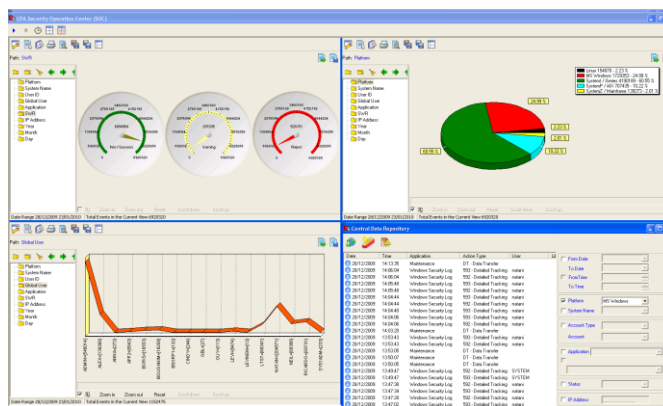
# Bsafe/Cross-Platform Audit for IBM i

Advanced Auditing of IBM i data, security and system events in a graphical UI



More events than all the rest put together...

DB2 Data Before / After • System Audit • QHST  
Application Audit • SQL Statement • IP Packet Filtering  
Compliance Deviations • Message Queue





# Bsafe

Bsafe/ Cross-Platform Audit  
Critical Data Monitor

## **Clear and Easy Display of Your Security Audit**

Intuitive and user-friendly audit trail of all database changes, exit point activity, SQL commands, TCP/IP access and compliance deviations found. The events are broken down into its appropriate parameters making it easy to understand each event.

## **Detailed Filtering Criteria to Analyze Security Audit Events**

The security auditor can view security events on-line and filter them on the screen without the need for additional applications or programming.

Filtering can be done on date and time ranges, account type, user, event status, IP address and application event type. The application can be filtered down to highly granular levels such as record updates, FTP downloads, invalid passwords and user profile changes.

## **Dynamic Graphs**

You can produce graphs to identify trends and pinpoint behavior in your system activity. Dynamically drill down from your chosen starting point until you have reached the desired selection. Print the graphs, save them in PC file format or email them as you wish. Events from across the enterprise can be combined, sorted and filtered into hundreds of different combinations of platform, application, IP address, user, identity management user, transaction status and date. The graphs are built dynamically by the user selecting the sort parameter at each level

Each component of the on-screen graphs can be expanded at the click of the mouse to show the actual audit events behind the statistics and each event can be drilled down to show its finest details including the name and value of each event parameter.

The graphs include statistics views and time-line views of the audit events. The graphs and summary tables can be displayed on the screen, printed, sent by email and saved as files in various formats including PDF and MS Office-compatible HTML which can be opened by Excel and Word.

## **Offload audit data from IBM i to PC-based database**

After you transfer your audit data to the PC-based database (MS SQL server) the original logs can be purged on the source system, freeing up valuable storage space. Once imported to the CPA (Cross-Platform Audit) the information can be viewed and analyzed on your PC. You can schedule the transfers for unattended regular runs.

## **Report Generator**

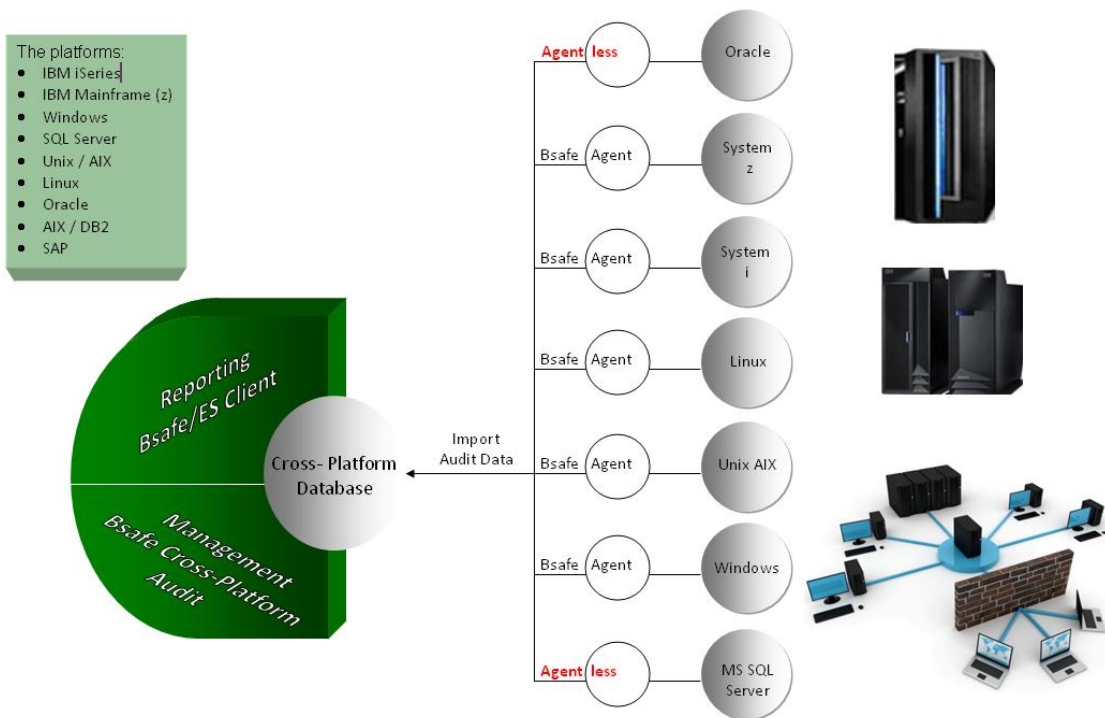
Includes a report generator with the capability of exporting reports to MS Excel, PDF and other formats. Report runs can be scheduled to run periodically by day, week or month.



## Bsafe/ Cross-Platform Audit Critical Data Monitor

### Consolidate Security Audit Data from Multiple Machines

Consolidate security audit data from any number of machines and event from other platforms (mainframe, Windows, SQL Server), all in one place. The importing of audit data from other computers requires installation of appropriate Bsafe agents on those machines too. You can create logical users called IDS users, to audit activity of a user having different logon IDs. The IDS user doesn't require any pre-defined identity management requirements like the implementation of single user sign-on.



Visit our website [www.bsafesolutions.com](http://www.bsafesolutions.com)

Or call one of our offices,

<b>USA New Jersey</b>	Tel: 877-237-8024 toll free	<a href="mailto:salesusa@bsafesolutions.com">salesusa@bsafesolutions.com</a>
<b>Canada</b>	Tel: 905-9434042	<a href="mailto:info-ca@bsafesolutions.com">info-ca@bsafesolutions.com</a>
<b>Europe &amp; R.O.W.</b>	Tel: +972-9-9610400	<a href="mailto:info-eu@bsafesolutions.com">info-eu@bsafesolutions.com</a>

Or speak to a local reseller near you. See the list on our website

# Maximum Security, **Simply!**